



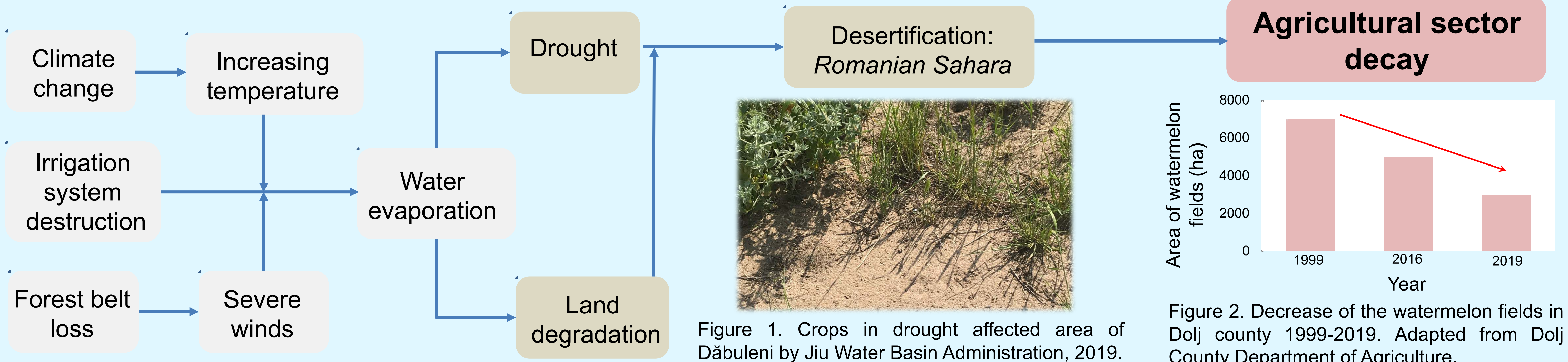
Break the drought

Bringing research advances to the field



Cristina Georgiana Zanfir, Jamilya Nauruzbayeva, Virginia-Mălina Voicu, Constantin Cristian Bilteanu, Mircea Gabriel Macavei, Norbert Bara

CHALLENGE: Rehabilitation of drought affected areas in Oltenia Plain



STUDY AREA

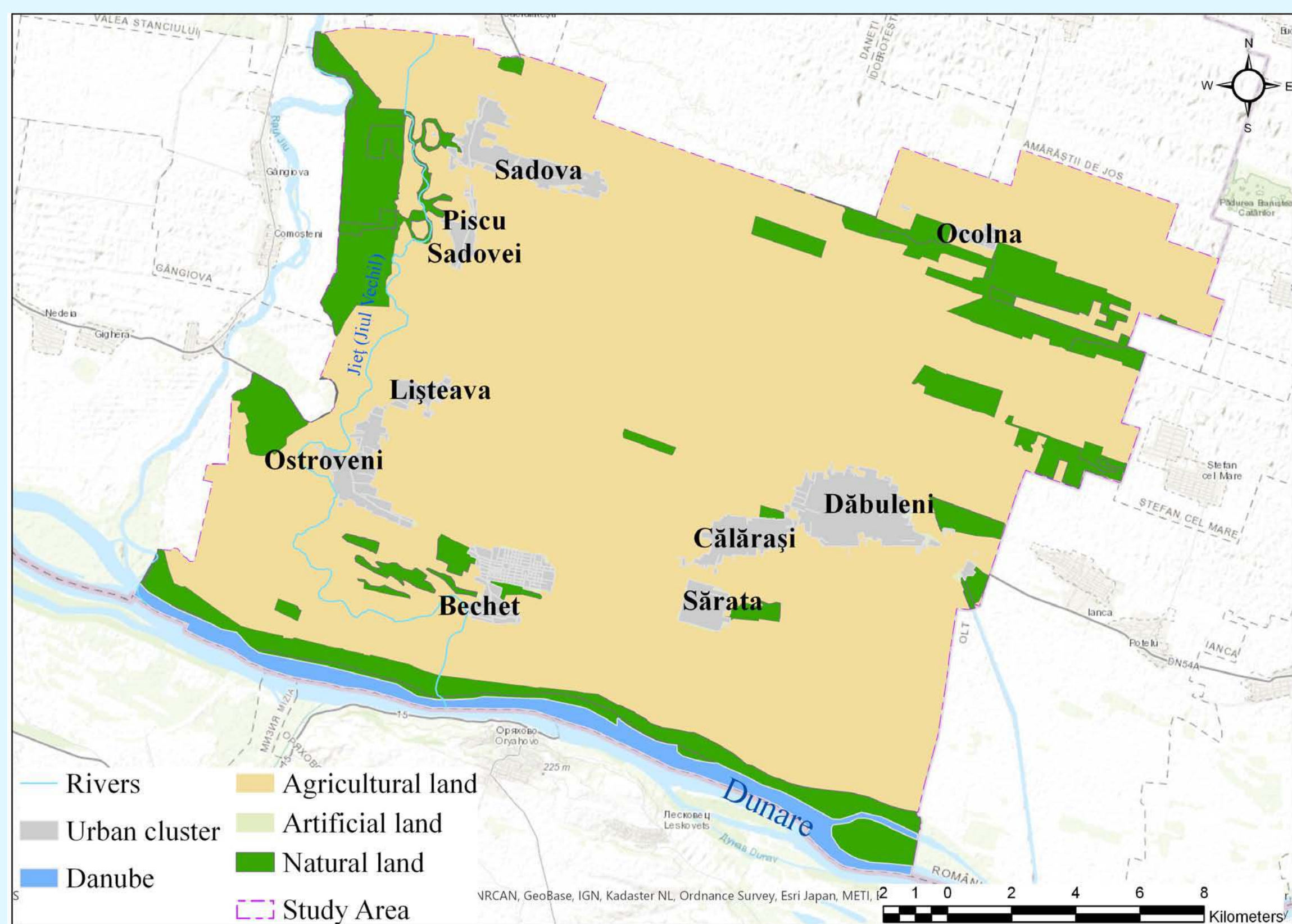


Figure 3. Map of study area: Dăbuleni, Călărași, Sărata, Sadova, Lișteava and Ostroveni territorial administrative units, 2019. By C.Zanfir.

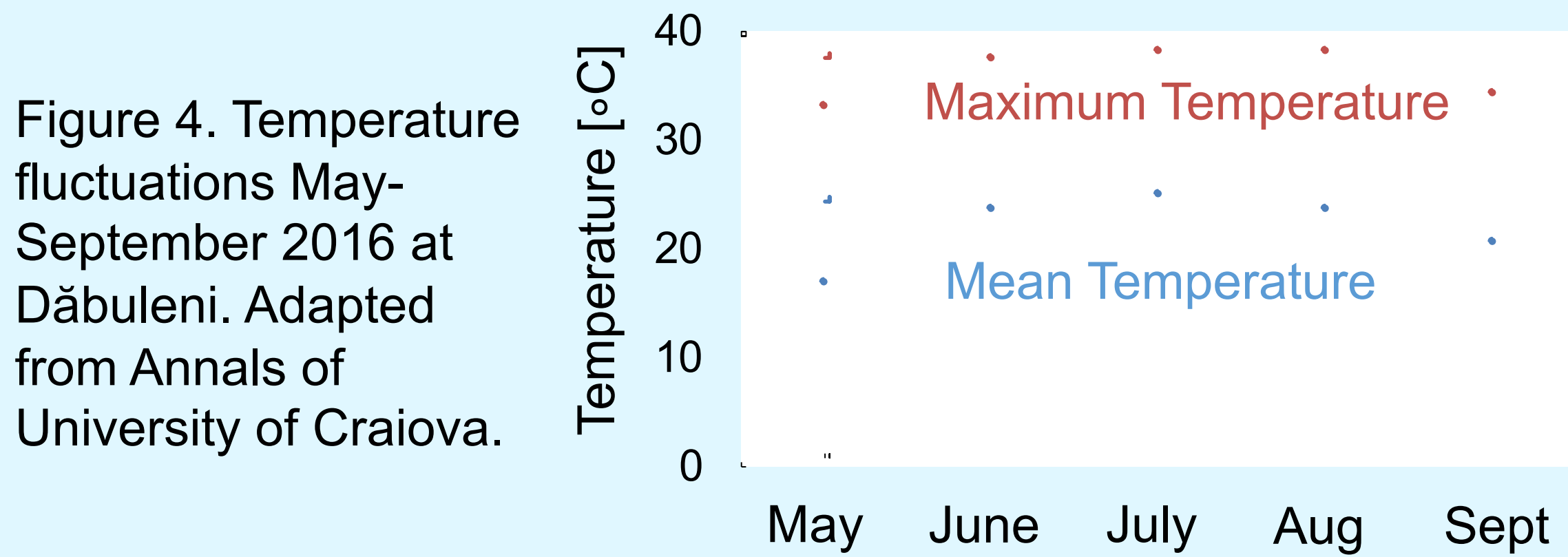


Figure 4. Temperature fluctuations May-September 2016 at Dăbuleni. Adapted from Annals of University of Craiova.

INSPIRATION GUIDE: Methods to mitigate the effect of drought on agricultural sector

Integrated approach

Short-term solutions

- Introducing the farmers to **new technologies** developed by R&D Center for Field Crops on Sandy Soils Dăbuleni.
- Surface mulches** reduce the water losses from the soil and keep it moist.
- Several kinds of **drought resistant crops** already showed promising results: Sweet potatoes, Peanuts, Beans, Kiwis, Sunflowers, Olives.

Long-term solutions

- Bringing **Sadova - Corabia irrigation system** to operation at full capacity.
- Centralized irrigation system will lead to the increase of agricultural income.
- Restoring the **forest belt**. The belt will help to decrease wind deflation of soils and dunes movement.

CONCLUSION: Our plan to increase agricultural productivity and sustainable water management

- Step 1.** Improve **cooperation** between the stakeholders: authorities and local inhabitants.
- Step 2.** Implement agricultural **innovations** developed by the Research Station at the fields.
- Step 3.** Attract **investments** to make Sadova-Corabia water affordable for the users and to plant the forest belt.



With our mulching technology you will get **30 tonnes more** of watermelons per 1 ha!



Sounds great! I would love to use it at my farm.



Funding sources:



Wetskills-Romania 2019 is supported by:



Embassy of the Kingdom of the Netherlands



van hall larenstein university of applied sciences



Study case providers:



Administrația Națională "APELE ROMÂNE"