



Your Water Blueprint

Empowering citizens to improve water sustainability by showing a personal blueprint in one graph

Martien Aartsen, Agustin Botteron, Nanne Tolsma, Charlotte Vagevuur

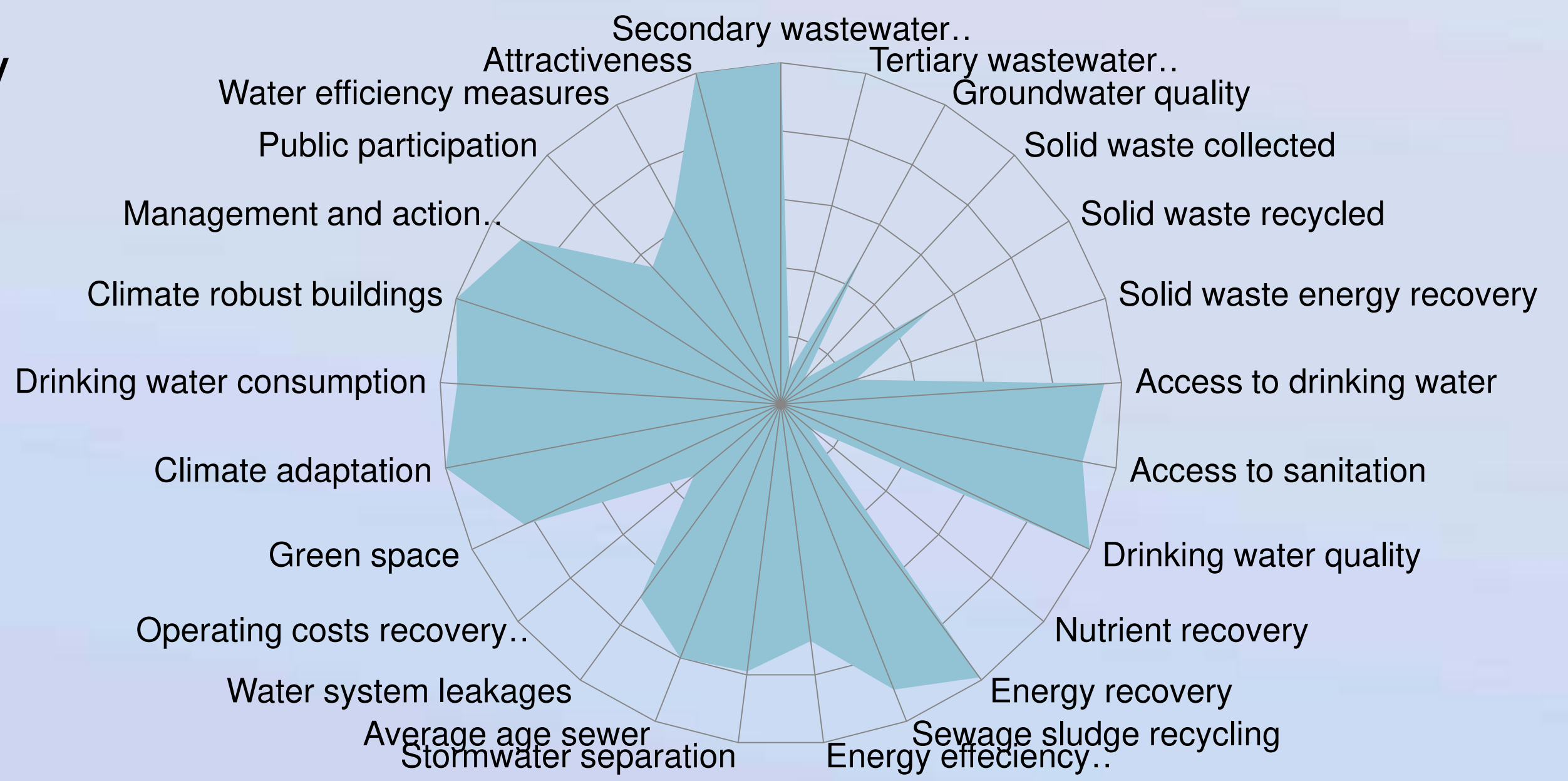
ClearBlue Solutions

The City Blueprint; a quick scan of water strengths and weaknesses of a city, designed by KWR (2012) to empower policy makers. The blanks illustrate the weaknesses. **The bluer, the better.**

Households contribute significantly to the City Blueprint. So what can citizens do to improve their city bottom-up?

Where are citizens efforts required?

Boston City Blueprint

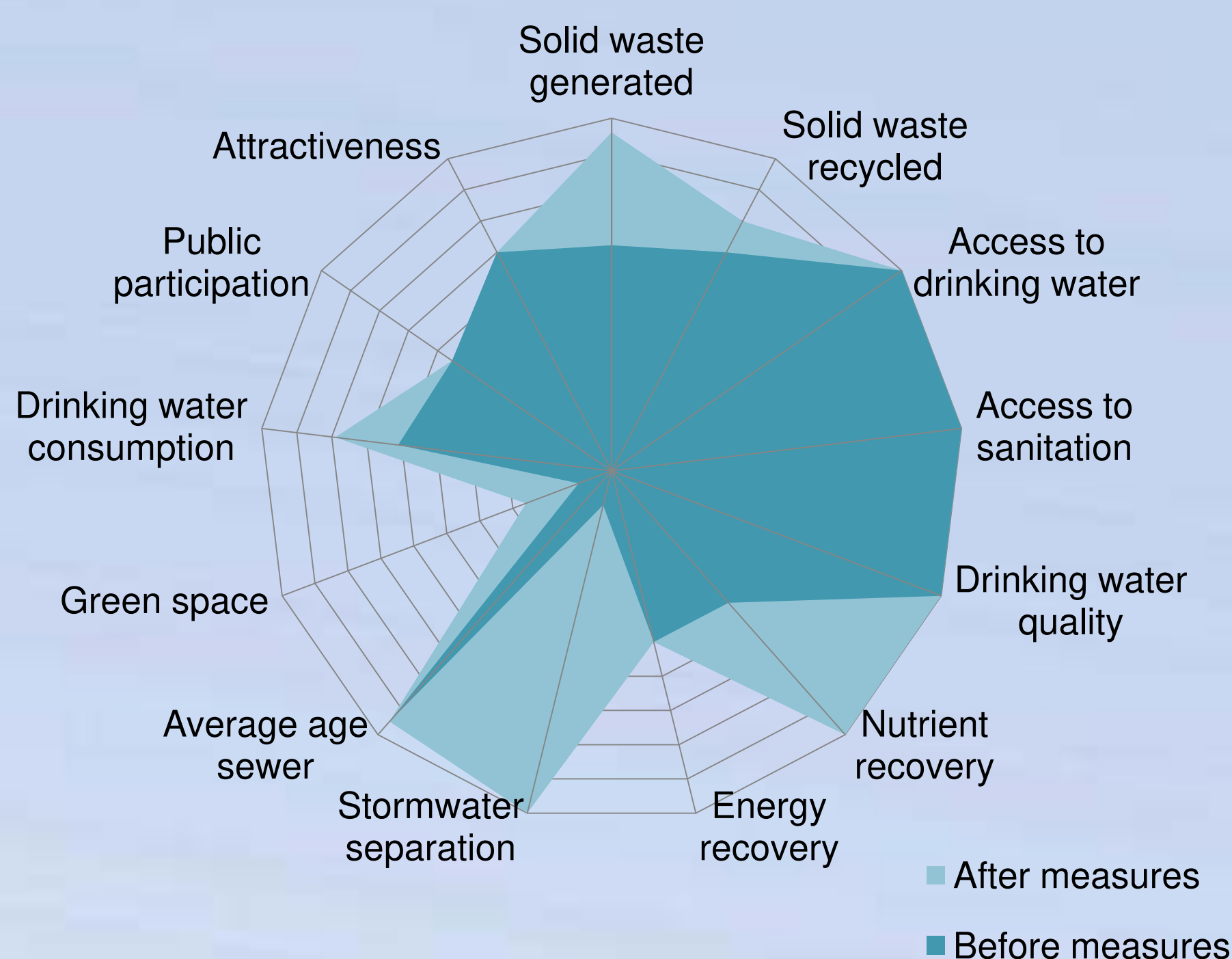


The solution: Your Blueprint

Your Blueprint; a quick scan of your household's water strengths and weaknesses, showing where your impact is most required to contribute to your city.

To improve Your Blueprint, we provide you with access to simple and cost effective measures to improve water sustainability.

Result of measures applied to your average house Boston



PARKLET **RECYCLING** **GREEN ROOFS**
RAIN BARREL **LEAKAGE FIX**
RAINWATER HARVESTING **COMPOSTING**
WASTE REDUCTION
EFFICIENT SHOWERHEAD **WATER SAVING TOILETS**
SHOWER VS BATH

The impact of \$149 of simple measures:

- Installing a water saving shower and adding a toilet stop, the water demand will drop by 25%, resulting in a \$250 saving each year.
- Waste separation and recycling will decrease solid waste generation by 35%.
- Installing a rain barrel will relieve the sewage of your storm water and save water.
- Greening the driveway will expand the green space significantly

KWR: Van Leeuwen, van Wezel & van de Ven (2012) City Blueprint: 24 indicators to Assess the Sustainability of the Urban Water Cycle. KWR.

Wetskills-USA 2016 is supported by:



Northeastern University
 College of Social Sciences and Humanities
 School of Public Policy and Urban Affairs



Study case provider:

